

**Biatain**<sup>®</sup>  
Ibu

Biatain<sup>®</sup> Ibu  
C.A.R.E.S for painful wounds

Biatain C.A.R.E.S

About the patient

About the wound

About the outcome



Biatain – the simple choice

# 6 out of 10 wounds are painful<sup>1</sup>



**83%** of patients with arterial ulcers report pain<sup>2</sup>

**65%** of patients with venous leg ulcers experience severe or continuous pain with a leg ulcer<sup>3</sup>

**50%** of patients with venous leg ulcers could not tolerate compression banding, mainly because of pain<sup>4</sup>

*"Chronic wound pain is frequently severe, persistent and quickly leads to sleeplessness, emotional distress, loss of self esteem, social isolation and depression"*<sup>5</sup>

Studies on Biatain Ibu show positive healing rates in chronic wounds<sup>14</sup>

## Description

Biatain Ibu is a soft and flexible absorbent foam dressing. Biatain Ibu is the first and only dressing ever to combine moist wound healing with local release of ibuprofen.<sup>1</sup>



- Unique 3D foam structure that conforms closely to the wound bed for superior absorption – also under compression
- Contains 0.5 mg/cm<sup>2</sup> of ibuprofen
- One dressing (10 x 12cm) contains 60mg of ibuprofen which is continuously released for up to 7 days, in proportion to the level of exudate<sup>6</sup>
- No levels of ibuprofen detectable in blood samples<sup>6</sup>

## Usage

Biatain Ibu can be used for a wide range of exuding wounds, including leg ulcers, pressure ulcers, second-degree burns, postoperative wounds, skin abrasion and non-infected diabetic foot ulcers. Biatain Ibu Non-Adhesive can also be used on donor sites. Biatain Ibu is suitable for use in combination with compression therapy.

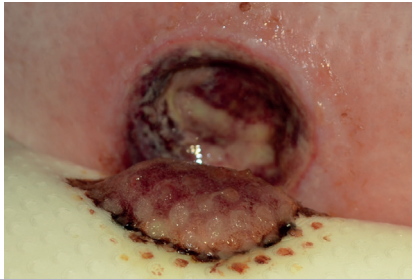
## Comparative studies have shown a reduction in wound pain in patients wearing Biatain Ibu

- 74% of patients experienced pain relief in first evening with Biatain Ibu<sup>7</sup>
- Biatain Ibu successfully controlled patient's pain so much so that compression was tolerated<sup>8</sup>
- Significant difference observed in patient well being between Biatain Ibu and local best practice<sup>9</sup>



# Biatain Ibu C.A.R.E.S

# C

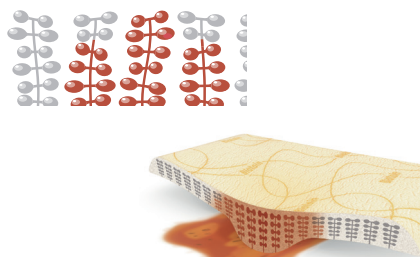


CONFORMABILITY

## Biatain foam conforms

- Conforms closely to the wound bed
- Optimal moist wound healing environment
- Local release of Ibuprofen<sup>6</sup>

# A

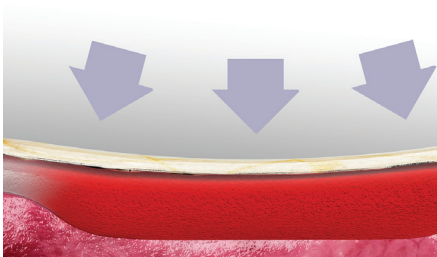


ABSORPTION

## We believe that absorption is the key to wound healing

- 3D polymer foam structure
- Absorbs exudate vertically
- Reduces the risk of maceration and excoriation

# R



RETENTION

## Biatain retains wound exudate

- Exudate is locked away even under compression
- Improves patient comfort and experience

# E



EXUDATE MANAGEMENT

## Exudate management<sup>10-13</sup>

- Superior absorption
- Reduces leakage
- Skin maceration
- Risk of infection
- Optimal moist wound healing environment

# S



THE SIMPLE CHOICE

## Not all foams are the same

Biatain foam works in the same way across the entire range. Biatain Ibu is the simple choice for local pain management.

# Superior absorption for painful wounds

## Biatain® Ibu Non-Adhesive - superior absorption for painful wounds



Size (cm)	Qty	Code	NHS	PIP
5x7	5	4105	ELA408	346-6430
10x12	5	4152	ELA320	327-0436
10x22.5	5	4158	ELA304	327-0451
15x15	5	4155	ELA322	327-0444
20x20	5	4120	ELA403	346-6422

## Biatain® Ibu Soft-Hold - superior absorption for painful wounds that are difficult to bandage



Size (cm)	Qty	Code	NHS	PIP
10x12	5	4162	ELA332	327-0469
10x22.5	5	4168	ELA302	327-0485
15x15	5	4165	ELA331	327-0477



**References:** 1. Hofman, D et al. Pain in venous leg ulcers. Journal of Wound Care 1997; 6, 222-224 2. Lindholm C., Bergsten, A., Berglund, E. Chronic wounds and Nursing Care. J Wound Care 1999;8:1, 5-10 3. Briggs M, Nelson EA. Topical agents or dressings for pain in venous leg ulcers. Cochrane Database Syst Rev 2001; 2: CD001177 4. Briggs, M., Closs, S.J. Patients perceptions of the impact of treatments and products on their experience of leg ulcer pain. J Wound Care 2006; 15: 8, 333-337 5. Flanagan, M. Why is pain management for chronic pain so neglected. Wounds UK 2007, Vol 3, No 4 6. Jorgensen et al. Pain and Quality of Life for Patients with Leg Ulcer: Proof of Concept of the Efficacy of Biatain® - Ibu, a new pain reducing wound dressing. Wound Repair and Regeneration 2006, 14(3):333-339 7. Gotttrup et al. Reducing wound pain in venous leg ulcers with Biatain Ibu: A randomised, controlled double-blind clinical investigation on the performance and safety. Wound Repair and Regeneration 2008; 6:615-25 8. Kirby et al. Quality of life, exudate management and the Biatain foam dressing range. British Journal of Nursing 2008 Vol 17, No 15 9. Palao i Domenech R et al. Effect of an ibuprofen-releasing foam dressing on wound pain: a real life RCT. J Wound Care. Vol17, No.8, August 2008 10. Marburger M, Andersen MB. Presented at Wounds UK 2013 11. Data on file. Biatain Silicone Case series (7 HCPs evaluated a total of 39 patients). Coloplast 2013 12. Adderly UJ. British Journal of Community Nursing 2010;15(3):15-20 13. Thomas S & Young S. Journal of Wound Care 2008;17(7):309-15 14. www.worldwidewounds.com/2006/april/flannagan/ibuprofen-foam-dressings.html

Ostomy Care  
Urology & Continence Care  
Wound & Skin Care



Coloplast develops products and services that make life easier for people with very personal and private medical conditions. Working closely with the people who use our products, we create solutions that are sensitive to their special needs. We call this intimate healthcare. Our business includes ostomy care, urology and continence care and wound and skin care. We operate globally and employ more than 7,000 people.

Coloplast Ltd  
Nene Hall  
Peterborough Business Park  
Peterborough  
PE2 6FX

The Coloplast logo is a registered trademark of Coloplast A/S. © 2014-8  
All rights reserved Coloplast A/S, 3050 Humlebaek, Denmark.

CM673N

[www.coloplast.co.uk/wound](http://www.coloplast.co.uk/wound)